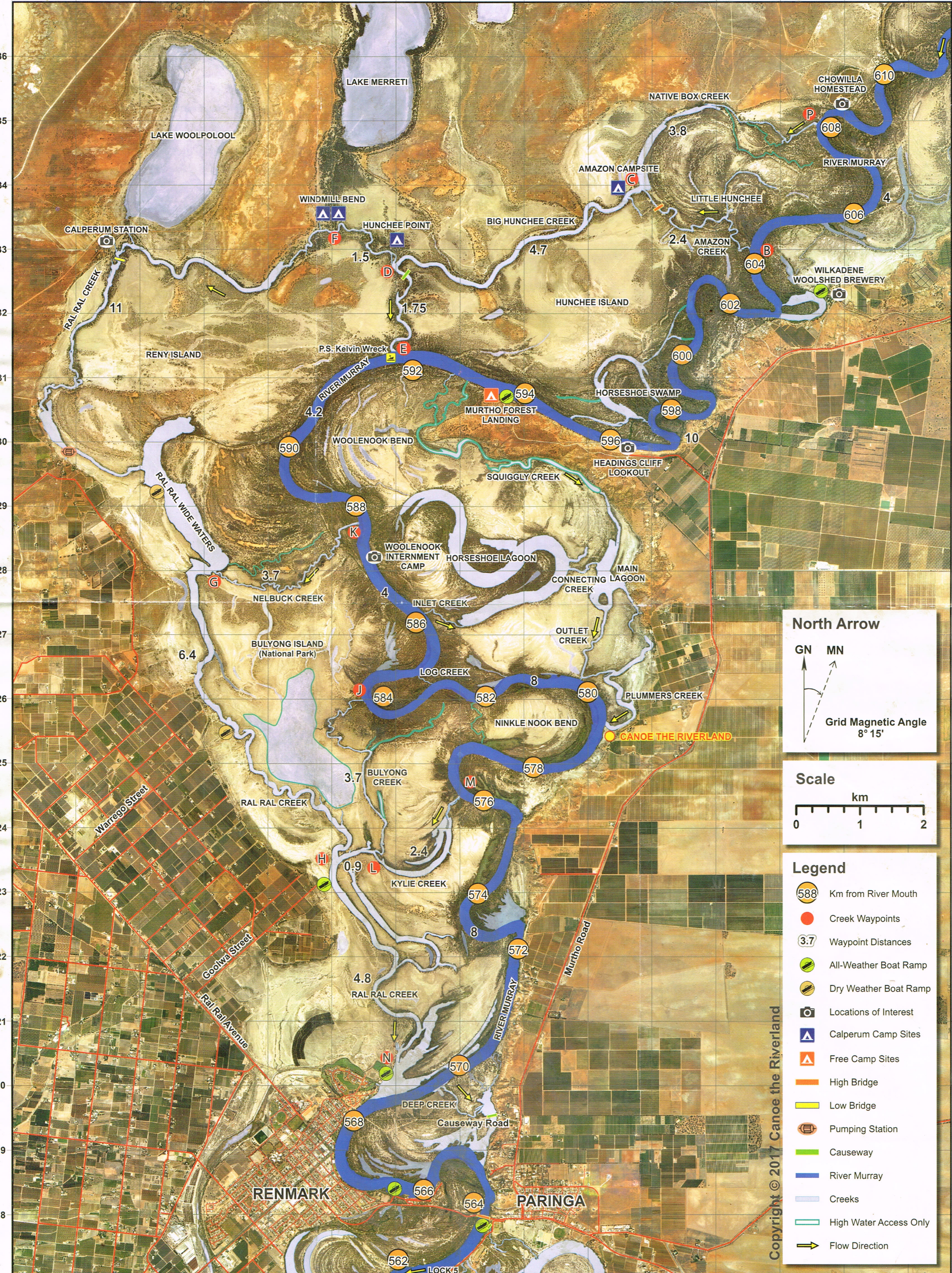


# Ral Ral Creek Guide

72 73 74 75 76 77 78 79 80 81 82 83 84 85 86



**North Arrow**

GN MN

Grid Magnetic Angle  
8° 15'

**Scale**

km

0 1 2

**Legend**

- 588 Km from River Mouth
- Creek Waypoints
- 3.7 Waypoint Distances
- 🚤 All-Weather Boat Ramp
- 🚤 Dry Weather Boat Ramp
- 📷 Locations of Interest
- ⛛ Calperum Camp Sites
- ⛛ Free Camp Sites
- 🚦 High Bridge
- 🚦 Low Bridge
- 🚰 Pumping Station
- 🛤 Causeway
- 🌊 River Murray
- 🌊 Creeks
- 🌊 High Water Access Only
- ➡ Flow Direction

Copyright © 2017 Canoe the Riverland